

Fact Sheet

Innahura Maldives Resort
Maldives

This new 3 Star resort will open at the beginning of March 2019.

Located in the South East of the Lhaviyani Atoll it is adjacent to the Maldives' longest coral reef. The resort has a magnificent lagoon, 1.5kms of white sand beach and occupies a total area of around 25 acres.

LOCATION

Lhaviyani Atoll

40 minute seaplane transfer from the international airport

ACCOMMODATION

78 Bungalows are spread along the beach around the island.

Sunrise Beach Bungalows (Size: 79 m²)

Beachfront location with sunrise view.

Sunset Beach Bungalows (Size: 79 m²)

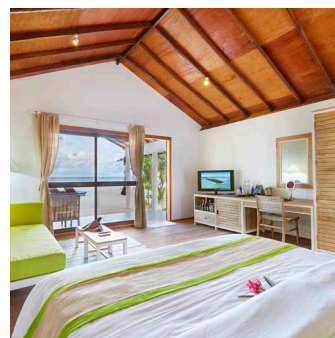
Beachfront location with sunset view.

Adjacent Beach Bungalows (Size: 158 m²)

Two adjoining beach bungalows on the sunrise side, ideal for families as each bungalow can accommodate a maximum of 2 adults and 2 children under 15 or 3 adults.

ROOM FACILITIES:

- Air conditioning
- Ceiling fan
- In-room safe
- Minibar (not stocked)
- Sitting area
- IPTV
- Furnished terrace
- Outdoor shower
- Nightly turndown service



Meal Plans

The resort operates on a Full Board basis with the option to upgrade to All Inclusive Easy which includes:

- Breakfast, lunch and dinner
- Unlimited alcoholic and non-alcoholic beverages by the glass at the Sand Bar including non carbonated bottled water, soft drinks, fruit juices (packet), draught beer, red, white and rose house table wines, house brand spirits (Gin, Vodka, Rum, Whisky, Tequila, Brandy), a limited selection of cocktails and mocktails, tea, coffee including espressos, cappuccinos, lattes and macchiatos, iced coffee and iced tea. Beverages are served from 10h00 to 24h00. Spirits, cocktails and mocktails are not served at the Olu Bar.
- Free use of the gym, badminton, volleyball, table tennis, billiard, darts and football pitch
- Free use of non-motorised water sports equipment (excluding snorkelling equipment)
- Twice daily house reef snorkelling tours (excluding snorkelling equipment)



DINING

Dhoni

The main restaurant is open air with a sand floor and a thatched roof plus an outdoor terrace on the sunset side of the island. Breakfast, lunch and dinner are 'all you can eat' buffet meals. Optional a la carte special dinners served on the beach are available to celebrate special occasions.

The Sand Bar

Located on the beach close to the main restaurant.

The Olu Bar

Located over the water close to the Dive Centre.

SPA

The Duniye spa provides a tropical spa experience focused on wholeness, simplicity, purity and quality.

Wi-Fi

Wi-Fi is complimentary throughout the resort.

FACILITIES & ACTIVITIES

- Swimming pool and separate children's pool
- ProDivers Scuba Centre
- Innahura Windsurf and Sailing Centre
- Fitness Centre
- Guided excursions
- Games Room: table tennis, billiards, foosball, darts and board games
- Evening entertainment
- Lending Library
- Tennis court
- Football pitch
- Souvenir Shop
- Internet Cafe

All information in this fact sheet is applicable from 1 November 2018 to 31 October 2019 and is subject to change without prior notice.

