



**Holiday
Factory**.co.za
Straight from the factory to you

Fact Sheet

Katathani Phuket Beach Resort,
Thailand

This Thai style beachfront property is located on the secluded Kata Noi Bay, boasting an array of resort facilities with two distinctive wings, the tropical Bhuri Wing across the lane and the beachfront Thani Wing with suite style accommodation suited for couples, honeymooners or families.

LOCATION

Phuket, Thailand

ACCOMMODATION

Deluxe Room

Rooms are located in the Bhuri Wing overlooking the gardens from a balcony and feature 40m² of living space complete with en suite facilities with shower only. Bedding configuration is a King Bed or 2 Queen beds.

Deluxe Pool

Rooms are located in the Bhuri Wing with pool views from a balcony and feature 40m² of living space complete with en suite facilities with shower only. Bedding configuration is a King Bed or Hollywood twin.

Grand Deluxe

Rooms are located in the Bhuri wing overlooking the gardens from a balcony and feature 50m² of living space, an adult bedroom with separated by a sliding door to kids bedroom. The bathroom is equipped with bathtub and separate shower. Bedding configuration is a King bed or Hollywood twin with 2 kiddy beds.

Junior Suite – Thani Wing

Suites are located in the Thani wing with views of the garden and ocean, and feature 45m² of living space complete with en suite facilities, bath tub and separate shower. Bedding configuration is a King bed or Twins.

Junior Suite Oceanfront – Thani Wing

Suites are located in the Thani wing steps away from the ocean and feature 50m² of living space complete with en suite facilities, bath tub and separate shower. Bedding configuration is a King bed or Twins.

ROOM FACILITIES

- Individually controlled air-conditioning
- Remote-controlled satellite television
- Private balcony
- Telephone
- Mini-bar
- Hair Dryer
- Tea/Coffee making facilities
- In-room safety box
- Katathani Essential Oil & Burner

DINING

Chom Talay

For a choice of Thai or Western delights served for breakfast or dinner.

Fisherman's Wharf

Savour the finest seafood along the ocean front.

La Scala

Authentic Italian cuisine served in elegant European style.

Chanadda

Relax to the gentle tones of Thai music while you dine the subtly spiced dishes of Thailand's aristocratic heritage.

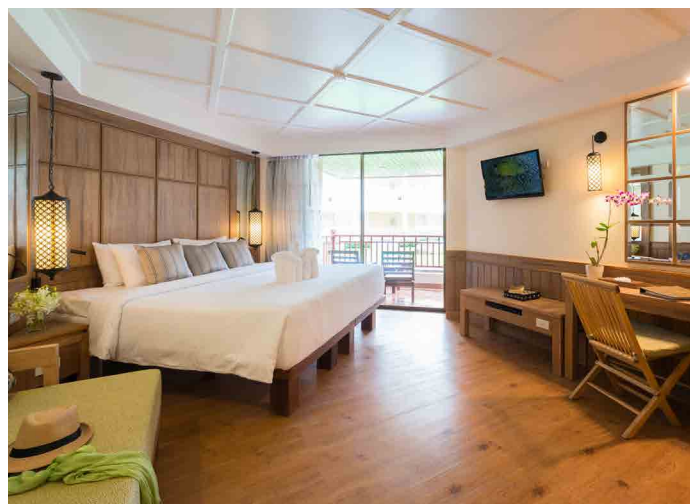
Seaside

Freshly baked pizza and ala minute cooked pasta.

Secretet

For international lunch or Phuket-styled cuisine just steps away from the ocean and pool.

Coconut Bar, Mango Bar, Pineapple Bar, Palm Bar, Beach Club Bar & Lobby Lounge





FACILITIES & ACTIVITIES

- Room service
- Laundry service
- Kids Club with outdoor playground
- Babysitting
- Fitness centre and sauna
- 6 Swimming pools, 3 Kiddy pools
- Tennis
- Billiards
- Game room
- Yoga
- Dive Shop
- Health Clinic 8am-5pm daily
- Currency Exchange
- Boutique & Gift shop
- Shuttle to Patong & Karon areas
- Meeting rooms & outdoor function area

SPA

Enjoy a selection of Massages, Facials, Body and Beauty treatments utilizing both professional aromatherapy products and carefully selected age old Thai beauty formulas at Tew Son Spa.

▪ WiFi

WiFi is available free of charge throughout the resort

