

Whether you're barefoot in the sand at the fabulous Sundowner bar on the peninsula, stylishly attired in the Teppanyaki restaurant that's raised on stilts, or on a dive through the spectacular Noonu Atoll, the All Inclusive and the easy accessibility of this island from Male makes it very family friendly.

#### LOCATION

Noonu Atoll  
45 minute Seaplane transfer

#### ACCOMMODATION

Economy Double Room (Size: 89 m<sup>2</sup>)

This entry level room is the same as the Double Room but it is in a non-optimal location and is therefore sold at a slightly lower rate.

Double Room Sea View (Size: 89 m<sup>2</sup>)

These ground floor rooms have a sea view and a terrace with seating.

Double Room Sea View Superior (Size: 89 m<sup>2</sup>)

Situated on the second floor, these rooms have a sea view and a terrace with seating.

Double Family Room - Sea View (179m<sup>2</sup>)

Two double rooms on the ground floor with a connecting door. These rooms have sea views.

Garden Pool Bungalow (Size: 89 m<sup>2</sup>)

These spacious rooms enjoy a sea view. The terrace from the bathroom leads to an enclosed garden with a private pool and sunbeds.

Beach Pool Bungalow (Size: 89 m<sup>2</sup>)

These spacious rooms enjoy a sea view. The terrace leads to the beach with private pool and sunbeds.

Over Water Pool Bungalow (Size: 93 m<sup>2</sup>)

The Water Bungalows sit on a jetty above the lagoon. They include a terrace with a private pool and sunbeds.

Over Water Suite (Size: 122 m<sup>2</sup>)

The Over Water Suite sits at the end of the jetty above the lagoon. It includes a terrace with a private pool and sunbeds.

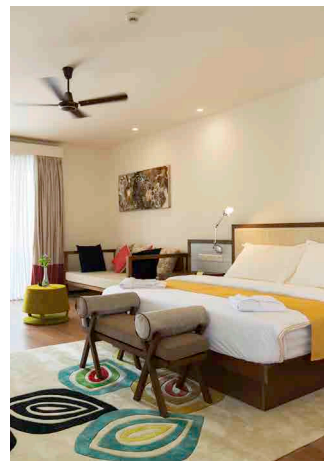
#### ROOM FACILITIES:

- Bathtub
- Shower
- WC and outside shower
- Air Conditioning
- Hair dryer
- Make up mirror
- Feel-good package: extra pillow, bathrobe, slippers, and coffee/tee facilities
- Mini bar (at additional charge)
- Flatscreen TV
- Wi-Fi
- Telephone
- Safe
- Fridge

#### MEAL PLANS

All Inclusive includes

- Breakfast, Lunch & Dinner (buffet) in the main restaurant
- Unlimited beverages: Coffee & Tea, selected alcoholic and non-alcoholic drinks at the bar (all day)
- WellFit ( Group Fitness Classes)
- SportsTainment (Beach Volleyball, Badminton, Water Polo, Billiards, etc)
- Entertainment (Live Show, Sundowner, DJ Parties, etc)





## DINING

### Main Restaurant

The main restaurant is open during all meal times, offering varied buffet options.

Specialty Restaurant (additional charge)

Teppanyaki Restaurant (additional charge)

## KIDS CLUB

### ROBY BABY (0-2 year old)

Free: Baby set including baby bath, changing mat, bottle warmer, crib, play mat, potty or toilet seat, diaper pail (limited availability, reservation required), as well as fresh baby food (on request in restaurant), warming baby food jars, highchairs in restaurant, room fridge and warming baby food jars outside the room (in restaurant or at the bar)

Additional charge: diapers, toiletries (wipes), babysitter (limited availability, €12 an hour/child and laundry service).

### ROBY CLUB CLASSIC (3-12 years):

All day activities from 09h00 to 18h00 and from 19h30 to 21h00 (excluding main day of arrival).

## SPA

Enjoy the massage and beauty areas and relax in a Finnish or Bio Sauna, the Sauna Garden or the Outdoor Sauna.

## Wi-Fi

Wi-Fi available in many public areas and in rooms

## WATERSPORTS & ACTIVITIES (\*charges may apply)

- Snorkelling\*
- Diving\*
- Fitness centre with Sport & fitness programmes
- Pilates & Yoga
- Beach volleyball
- Badminton
- Football
- Water polo
- Slacklining
- Table tennis
- Pool
- Crossboccia
- Crossgolf
- Table football
- Daily entertainment

